

ADMISSION TERMS:

- Applicants take exams in Biology, Mathematics and Russian.
- School leavers submit Single State Exam results.
- Graduates of technical schools, secondary vocational schools, high professional education, foreign citizens, disabled people take exams in traditional form.

The program is full-time on budget basis and paid basis.

The term of full-time studies: 4 years.

Official site:
iate.obninsk.ru

Admission Committee:
priem.iate.obninsk.ru

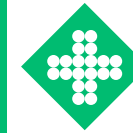
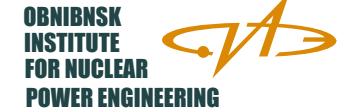
Net school:
school.mephi.ru

ADDRESS :

249040, Obninsk, Studgorodok st., 1

TELEPHONE :

+7(484)393-69-61

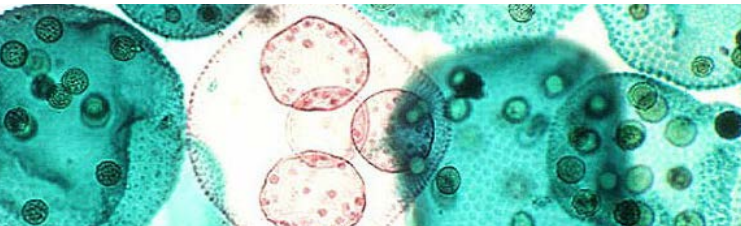


INSTITUTE OF ENGINEERING PHYSICS FOR BIOMEDICINE

EDUCATIONAL PROGRAM 06.03.01 BIOLOGY

INTERNATIONAL CAMPUS

- ecologically clean place
- complex of dormitories for 2000 students
- comfortable social environment
- developed infrastructure
- students' theater
- sports club

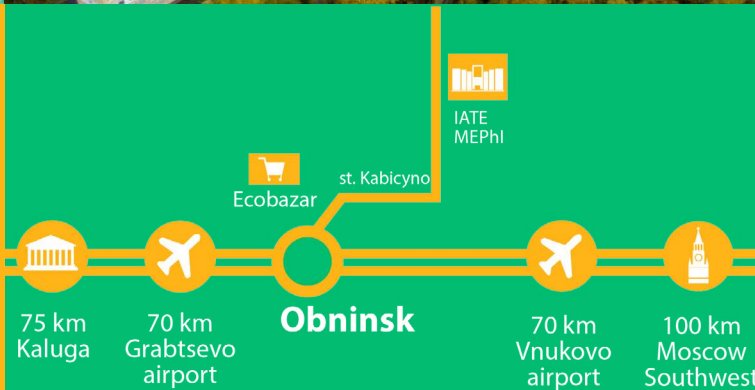


MASTER'S DEGREE

Educational programs are developed in the interests of employers. Practical training in laboratories of the leading companies. Efficient employment system. Startups support.

POST GRADUATE COURSE

Research in breakthrough fields of science. Research advisors are scientists of world level. Assistance in winning grants. Access to equipment of our partner-organizations.



THE SCHEME OF TRAVEL TO THE IATE MEPhI



GENERAL INFORMATION

HEAD OF EDUCATIONAL PROGRAM



**Dr. Biology, Professor
Lyudmila Komarova**

LNKomarova@mephi.ru
(484) 39- 3-11-79

**Program Profile:
"Radiobiology",
"Biomedical Research"
Qualification: Bachelor**

UNIQUE COMPETITIVE ADVANTAGES OF EDUCATIONAL PROGRAM

The important and rare feature of training highly-qualified scientists in "Biology" Department is close cooperation with major Obninsk research centers MRRC named after A.F. Tsyb – branch of FMRC named after P.A. Herzen of Russia's Healthcare Ministry, Russian Research Institute for Radiology and Agroecology and a number of others. There is a significant experimental base in their structures to work with students, to do fundamental and applied training and scientific research. The leading scientists of the above centers teach students.

MAJOR DISCIPLINES

Radiobiology profile:

- Biosafety and ecological risk
- Biometrics
- Population genetics of radiation impacts
- Radiation pathology
- Biological monitoring of radiation and chemical contamination
- Biosphere geochemistry and geophysics
- Radiobiology
- Human ecology
- Social ecology
- Radioecology
- Instrumental methods of analysis
- Biological approaches to rating radiation and chemical contamination
- Ecological toxicology
- Radiochemistry basics
- Nuclear physics

Biomedical research profile:

- Mathematical methods in biology and risk assessment
- Informatics and modern information technologies
- General biology
- Biomolecular databases
- Mathematical models in ecology
- Microbiology
- Cytology
- Histology
- Cell biophysics & biochemistry
- Molecular biology
- Introduction to biotechnology
- Bioethics basics
- Biological and ecological informatics
- Biosafety of modern biotechnologies
- Quality control system in pharmaceutical companies



EMPLOYMENT FOR GRADUATES. CAREERS. PARTNERS OF THE PROGRAM.

Certified biology bachelors work in:

- Governmental administrations, committees on hydrometeorology and environmental control, sanitary-epidemiological surveillance, environmental protection, in national parks, wildlife reserves,
 - Quality control laboratories of Obninsk pharmaceutical companies: BION, Medbiopharm, Mirpharm, Hemopharm, AstraZeneca and others; in Moscow region companies: AVON (Narofominsk), LG Electronics (Dorokhovo), Samsung Electronics, Oriflame, Nestle (Vorsino),
 - Laboratories of major scientific organizations: MRRC named after A.F. Tsyb: radiation biochemistry, pathology, immunology, postradiation rehabilitation, biophysics and others, Russian Research Institute for Radiology and Agroecology: plants radioecology, microbiology, radiation accidents modeling, JSC "TYPHOON", IPPE.
- In 2009 Scientific-Educational Center (on radiation biology and medicine) was founded in "Biology" Department jointly with MRRC and Scientific-Educational Center jointly with RRIAE (on ecotoxicology and radioecology).
- In 2014 a scientific cooperation agreement was signed with "Competence Alliance "Active Molecules Park" to conduct joint research in bio pharmaceuticals of radiation biology and medicine as well as to provide human resources to Kaluga pharmaceutical cluster.

